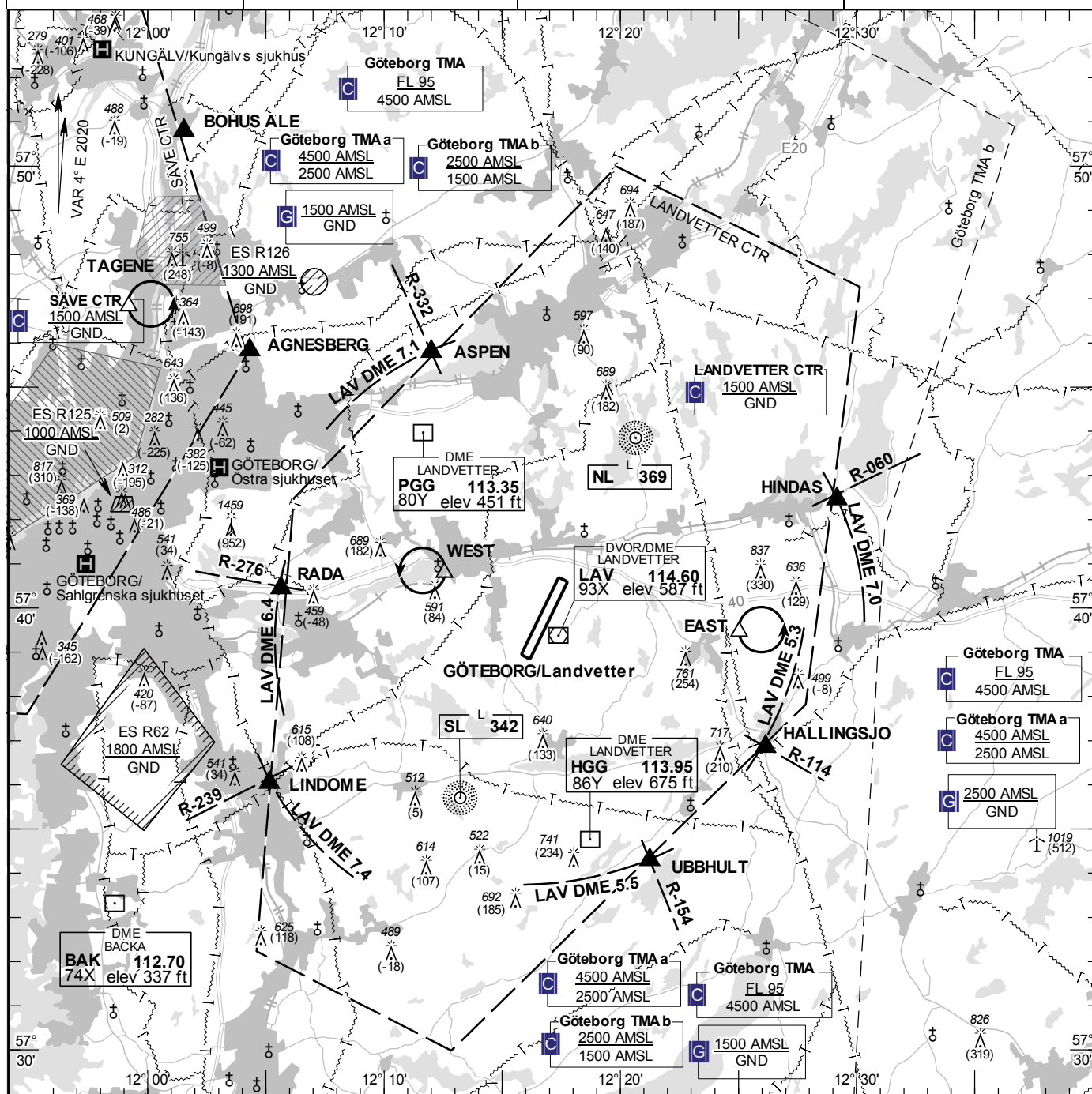


**TA 5000 AMSL**

|                   |         |
|-------------------|---------|
| LANDVETTER TOWER  | 118.605 |
|                   | 123.100 |
| LANDVETTER GROUND | 121.905 |
| CLR DELIVERY      | 121.680 |
| LANDVETTER ATIS   | 118.380 |
|                   | 114.600 |

**GÖTEBORG/Landvetter  
SWEDEN**



Aircraft outside CTR, having received no clearance to enter, should land at an aerodrome outside CTR. If no suitable aerodrome is within reach:

- 1 SQUAWK 7600 and blind transmit intentions.
- 2 Enter CTR via RADA at or below 1500 ft AMSL and proceed to Holding WEST.
- 3 Hold as published and stand by for light signals from TWR.

Obstacle below 197 ft AGL not shown in CTR.

| RWY<br>NR | THR<br>ELEV | PAPI<br>(MEHT)        |
|-----------|-------------|-----------------------|
| 03        | 478.3 ft    | Left/3.00°<br>(59 ft) |
| 21        | 506.4 ft    | Left/3.00°<br>(56 ft) |

See GEN 2.3

|            |                  |
|------------|------------------|
| ASPEN      | 574547N 0121200E |
| HINDAS     | 574227N 0122910E |
| HALLINGSJO | 573651N 0122609E |
| UBBHULT    | 573417N 0122115E |
| LINDOME    | 573602N 0120509E |
| RADA       | 574026N 0120538E |

EAST: Hold south of road 40 and east of power line, east of point 573927N 0122502E

WEST: Hold west of LANDVETTER church, west of point 574047N 0121232E